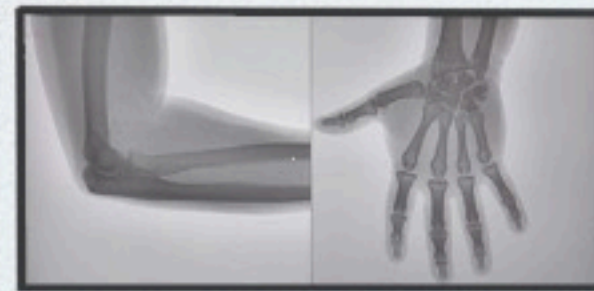




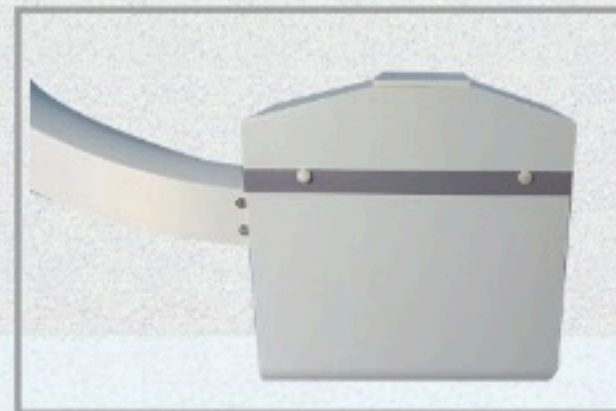
User friendly easy to operate



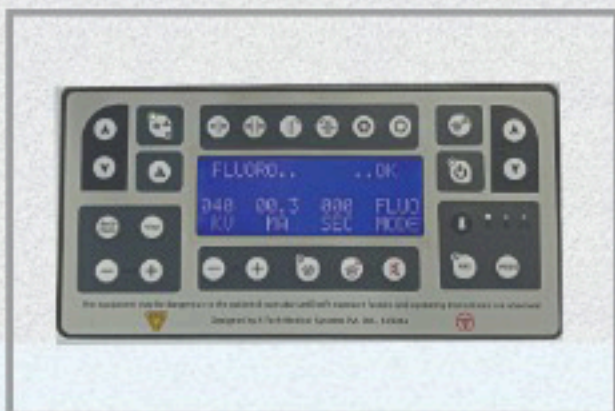
27" / 32" High Resolution Monitor



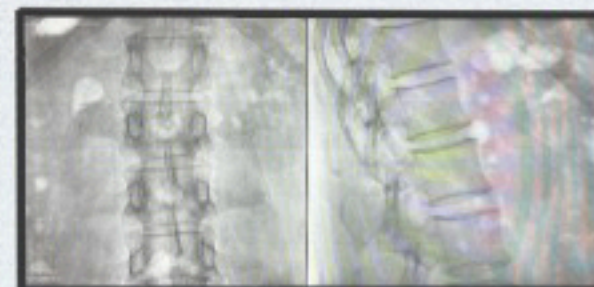
27" / 32" High Resolution Monitor



Stationary / RA Tube with high cooling system



Soft touch Switches with Big LCD Display



27" / 32" High Resolution Monitor



Dynamic DR with 1k x 1k Image Resolution

## X-Tech Medical Systems Pvt. Ltd.

### Head Office :

P.434, Parnashree Pally, Kolkata 700060

Phone no. 8240864269

Email. [info@xtechmedical.in](mailto:info@xtechmedical.in) /  
[amss.director@gmail.com](mailto:amss.director@gmail.com)

### Factory :

Adisaptagram, Addconagar,

Hooghly, Pin. 712121

Phone no. 7595972627

Email. [advmedsys@gmail.com](mailto:advmedsys@gmail.com) /  
[info@xtechmedical.in](mailto:info@xtechmedical.in)



Web : [www.xrayxtech.com](http://www.xrayxtech.com) / [www.xtechmedical.in](http://www.xtechmedical.in) / [www.x-techmedical.co.in](http://www.x-techmedical.co.in)

The company reserve the rights to add / delete/ modify in details of specifications & appearance mentioned here in .

smeindiasolution.com;  
mob: 9831501493



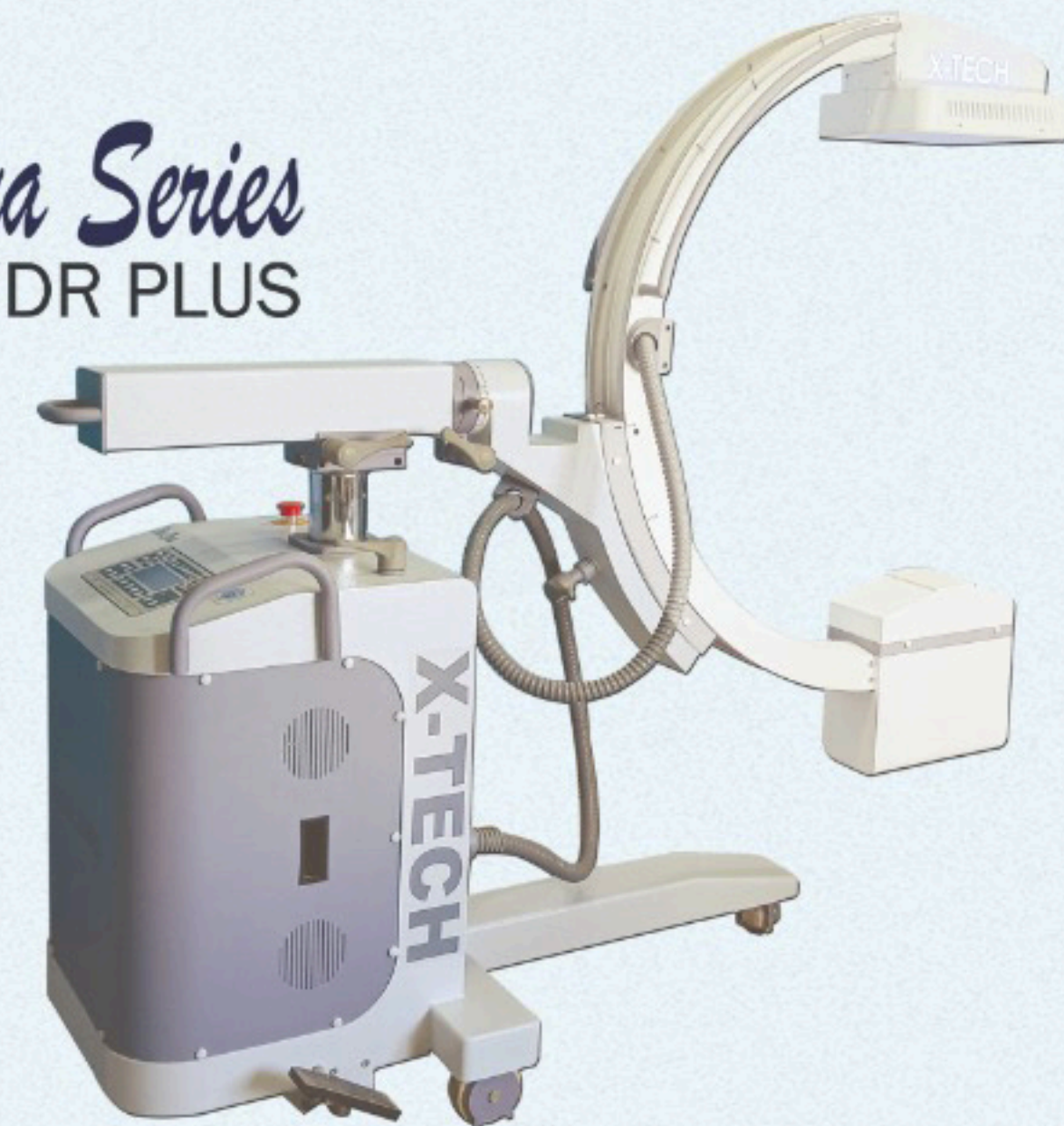
**X-TECH**

**Our Support Your Success**

# X-Tech Medical Systems Pvt. Ltd.

An ISO 9001:2015 / 13485 : 2016 / 14001 : 2015 / 45001 : 2018 / 10002 : 2014 Certified Company / NABL Accredited QA lab.

## Doxa Series DR/DR PLUS



IEC60601-2-52-2009

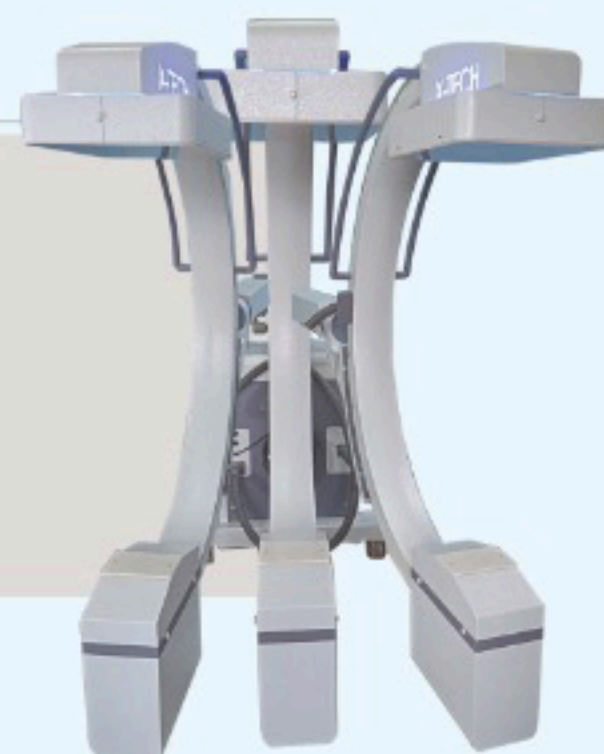


[www.xrayxtech.com](http://www.xrayxtech.com) / [www.xtechmedical.in](http://www.xtechmedical.in) / [www.x-techmedical.co.in](http://www.x-techmedical.co.in)

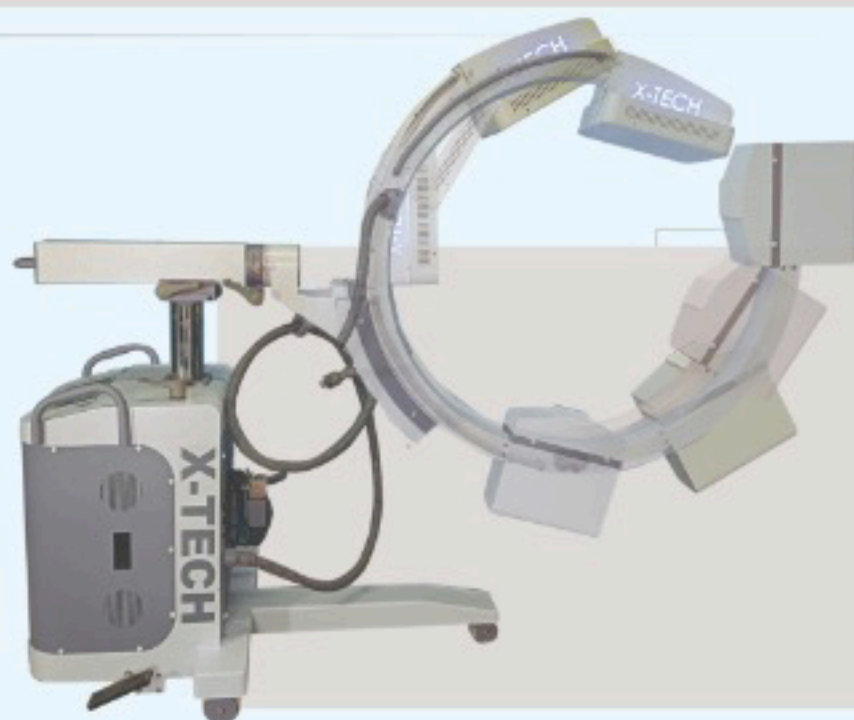




Rotational Movement



Swivel Movement



Orbital Movement



Up / Down Movement  
and Transverse Movement

# TECHNICAL SPECIFICATION

## C-ARM X-RAY MACHINE

High Frequency C-Arm machine diagnostic equipment for general-purpose fluoroscopy, it is designed for **Orthopedics, Neurology, Cardiology, Gastroenterology** Make: X-TECH MEDICAL SYSTEMS Pvt. Ltd. (AERB, BIS, Compliance with FDA & CE & IEC60601-2-52-2009, ISO 9001:2015, ISO 13485:2016, ISO 14001:2015, ISO 10002:2014, ISO 45001:2018 APPROVED, ALL the machine tested in NABL accredited QA Agency)

### Image Performance

DQE (1x1 @ RQA 5, 0.9 Gy) ~ 80% (@0.0 lp/mm), ~ 65% (@1.0 lp/mm), ~ 43% (@2.0 lp/mm), ~ 22% (@3.0 lp/mm)

Software : PATIENT ADMINISTRATION

1. Add New Patient
2. Modify Patient Details
3. Delete or search Patient data
4. Add/Modify Doctor Information
5. Add procedure information

### IMAGE ACQUISITION

1. Acquisition at 1024x1024@16 bits per pixel@15 FPS

2. Transfer to Reference Monitor

OPERATING MODES:- Normal Fluoro; Snapshot (Single image for better image quality)

### LIVE IMAGE PROCESSING

1. Frame Average upto 32 Frames
2. Brightness & Contrast Adjustment
3. Image Rotation (1 degree)
4. Image Flip / Mirror
5. Image Invert
6. Last Image Hold
7. Boosting Time Less Than 50 seconds

### IMAGE STORAGE

1. Storage at full resolution of 1024x1024@16 bits per pixel
2. 2,00,000 images at full resolution
3. 1000 runs of 200 frames

### IMAGE POST PROCESSING

1. Previous / Next Frame Viewing
2. Previous / Next Run Viewing
3. Image Invert
4. Zoom in / zoom out
5. Brightness & contrast adjustment
6. Annotations & Measurements
7. Image Rotation(1 degree)
8. Image Flip/Mirror
9. Frame by Frame Viewing of Run

### ON SCREEN DISPLAY

1. Shows Key Patient Information on Screen
2. Shows Hospital Name on Screen
3. 3840x2160 UHD

### REMOTE CONTROL

Most used functions can be controlled via Remote Control

UNIQUE FEATURES-ARTIFICIAL INTELLIGENCE ENABLED

1. Optimal Dose Indicator algorithm(ODI) for easy information to doctor/technician to get optimal image quality
2. This is useful even when used in Manual X-Ray mode. No need to adjust X-ray continuously. Indicator tells user when optimal dose is reached
3. AI & Deep Learning

### EXPORT MEDIA

1. Export of Runs to USB. AVI plays in all laptops include i-MAC / i-Pads
2. Export of AVI can be configured to hide patient data to protect privacy of patients

Monitor : 27 inches

C-Arm Movement : Rotation> 180 degree  
Motorized Up/down: 420mm  
Horizontal Travel:200mm  
Arc Orbital Movement: 120 degree  
Swivel movement 12.5 Degrees (Both Side).  
Source to image distance-940mm

Maximum output : 3.5/6 kW

Maximum kV : 110 / 120

Power input : 220V AC, 50 HZ, 16A

Display : Digital

Fault Finding : Self Diagnostics

Overload Protection : Simultaneous Protection from input voltage.

Voltage compensation : AUTOMATIC

### Advanced Technology

Direct-Deposit CSI combined with a precise balance of engineering factors. Panels developed for highly detailed, low-dose diagnostic imaging.

### ITALIC

Independent Adaptive Low-Dose Image Correction technology. Avoid low signal-to-noise Ratios caused by insufficient high voltage power.

